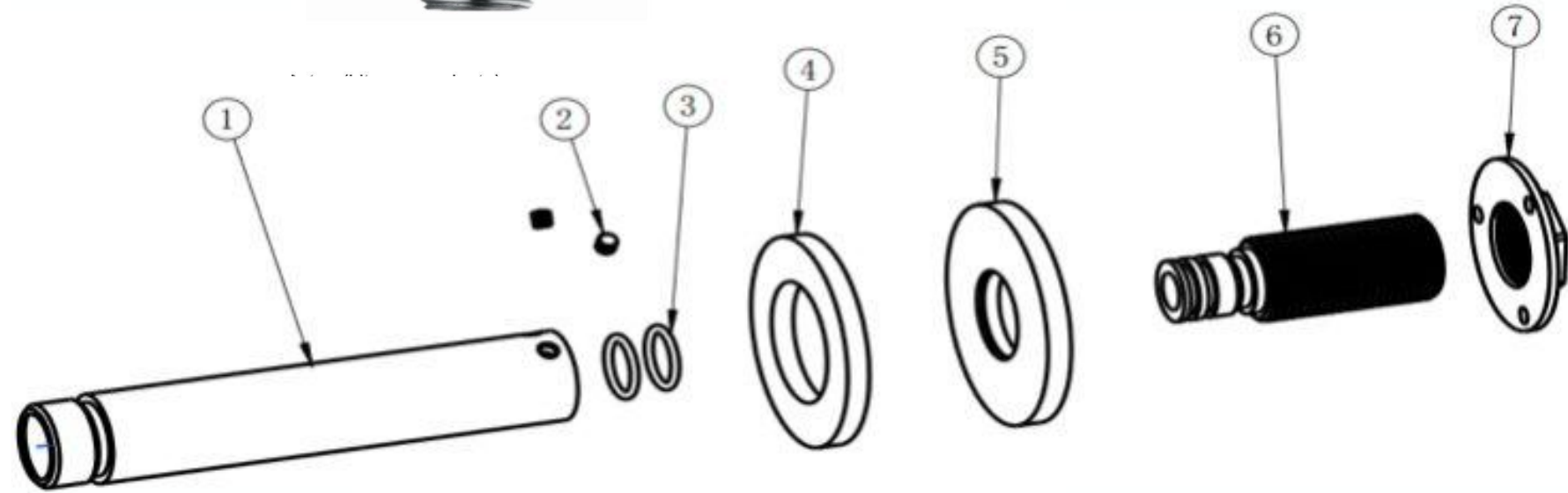
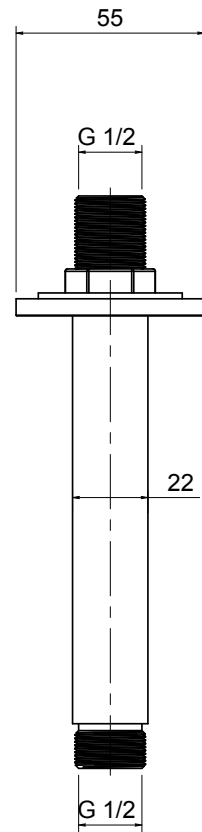


REV	DATE	DESCRIPTION	DRAWN	CHECKED
-	29/03/21	DRAWING CREATED	MF	MF



	CHROME	BRASS	MATT BLACK
PRODUCT CODE	SH-CMA-CP	SH-CMA-BB	SH-CMA-MB
CONSTRUCTION	BRASS BODY (CuZn38Pb18)	BRASS BODY (CuZn38Pb18)	BRASS BODY (CuZn38Pb18)
FINISH	CHROME PLATED TO BS EN 248	BRUSHED BRASS	MATT BLACK
PRODUCT TYPE	CONTEMPORARY	CONTEMPORARY	CONTEMPORARY
PLUMBING SYSTEMS	SUITABLE FOR ALL	SUITABLE FOR ALL	SUITABLE FOR ALL
CERTIFICATION	MANUFACTURED TO COMPLY WITH WRAS	MANUFACTURED TO COMPLY WITH WRAS	MANUFACTURED TO COMPLY WITH WRAS
FITTING	G 1/2" BSP EXTERNAL (MALE) THREAD	G 1/2" BSP EXTERNAL (MALE) THREAD	G 1/2" BSP EXTERNAL (MALE) THREAD

THE
LUXURY BATH
COMPANY

CREATED 29/03/21	DRAWN BY MF	CHECKED BY MF
DRAWING TITLE CEILING MOUNTED SHOWER ARM		
DRAWING No. SH-CMA	CURRENT REV. -	SHEET 1/1
SHEET SIZE A3	SCALE 1:2	

FLOW RATES (Litres per minute)										
SYSTEM PRESSURE	0.1 BAR	0.2 BAR	0.3 BAR	0.5 BAR	1.0 BAR	1.5 BAR	2.0 BAR	2.5 BAR	3.0 BAR	5.0 BAR
	-	2.1	-	3.4	5.9	7.3	8.5	9.6	10.6	-